

ABC Corporation

Anytown, USA

REPORT DATE:

January 1, 2023

COMPANY CONTACT:

Mr. John Smith

ADDRESS:

123 Main Street

Anytown, USA 12345



INSPECTION BY:

INVIZIONS, Inc.
Predictive Maintenance Services

2519 State Route 61 South

Norwalk, OH 44857

Phone: 419-663-8621

WWW.INVIZIONSINC.COM

VIBRATION ANALYSIS

2023 JAN 1	ITEM No.	EQUIPMENT DESCRIPTION	LOCATION
5	001	C220001 AIR COMPRESSOR	BOILER ROOM, B-22
5	003	50102103 #1 BOILER FEED WATER PUMP/MOTOR (EAST)	BOILER ROOM, B-22
5	005	50102108 RECIRC PUMP/MOTOR – TOWER EAST	BOILER ROOM, B-22
5	008	50102111 GLYCOL RECIRC PUMP/MOTOR WEST	BOILER ROOM, B-22
4	010	55619900 FAN EXHAUST SPIN FLSH APV PROD CELL	BUILDING 10
5	012	55602101 PUMP – BELT FILTER SLURRY HOLD TANK	BUILDING 10
5	031	58819426 FAN – EXHAUST – CTO SCRUBBER	BUILDING 16
5	032	58833100 BLOWER – CTO DILUTION	BUILDING 16
3	035	58619300 FAN – EXHAUST – HC-11 SCRUBBER (SLY)	BUILDING 27
5	056	56502605 PUMP P-605 (EAST) LAMELLA FEED TANK (T-604)	BUILDING 65
5	059	56502609 PUMP P-609 – WWTP EFF TANK (NORTH) T-605	BUILDING 65
4	064	47402800 PUMP – RECIRC #1 – RED TWR GLYCOL TANK (EAST)	BUILDING 74
5	080	BLOWER BL-262001	BUILDING 26
5	093	55619901 FAN (NOT ON ORIGINAL LIST)	BUILDING 10
5	094	PK BLENDER DC DISCHARGE FAN MOTOR	BUILDING 10
2	098	NORTH NO.2 CALCINER MAIN DRIVE MOTOR	BUILDING 26
5	099	NORTH NO.2 CALCINER MAIN DRIVE GEARBOX	BUILDING 26
5	102	NORTH NO.1 CALCINER MAIN DRIVE MOTOR	BUILDING 26
5	103	NORTH NO.1 CALCINER MAIN DRIVE GEARBOX	BUILDING 26
5	106	SOUTH NO.2 CALCINER MAIN DRIVE MOTOR	BUILDING 31
5	107	SOUTH NO.2 CALCINER MAIN DRIVE GEARBOX	BUILDING 31
5	108	SOUTH NO.3 CALCINER MAIN DRIVE MOTOR	BUILDING 31
5	109	SOUTH NO.3 CALCINER MAIN DRIVE GEARBOX	BUILDING 31
5	110	SOUTH NO.4 CALCINER MAIN DRIVE MOTOR	BUILDING 16

Priority Levels

1 Immediate Action Required

**2 Repair Within 30 Days
Monitor**

3 Repair At Next Outage

4 Schedule Proactive Repair

5 No Problem / Continue to

N/D/C = No Data Collected

Report Index: January 1, 2023

ABC Corporation – Anytown, USA

Machine Name	Priority Code	Description
58619300 FAN – EXHAUST – HC-11 SCRUBBER (SLY)	3	Indications of unbalance on motor and/or fan blades present
47402800 PUMP – RECIRC #1 – RED TWR GLYCOL TANK (EAST)	4	Indications of unbalance on motor and/or coupling misalignment
NORTH NO.2 CALCINER MAIN DRIVE MOTOR	2	Indications of bearing defects present throughout motor
55619900 FAN EXHAUST SPIN FLASH APV PROD CELL	4	Indications of probable mass unbalance on motor and/or fan blades present

Priority Levels

1 Immediate Action Required

**2 Repair Within 30 Days
Monitor**

3 Repair At Next Outage

4 Schedule Proactive Repair

5 No Problem / Continue to

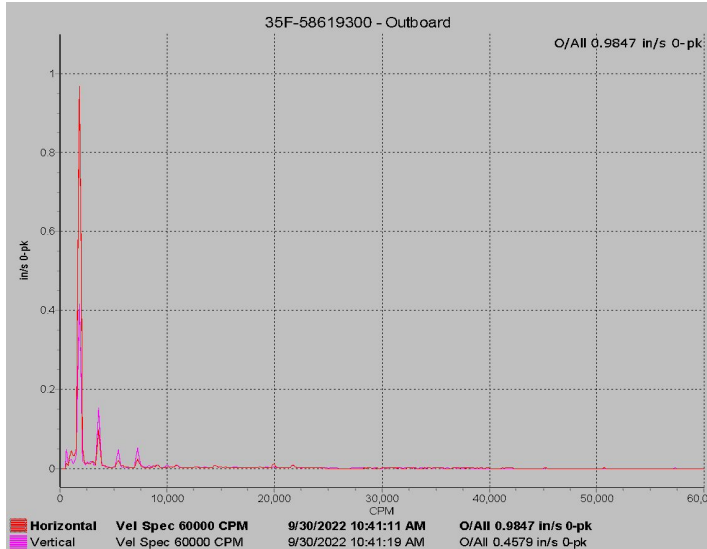
ABC Corporation – Anytown,

ITSA
58619300

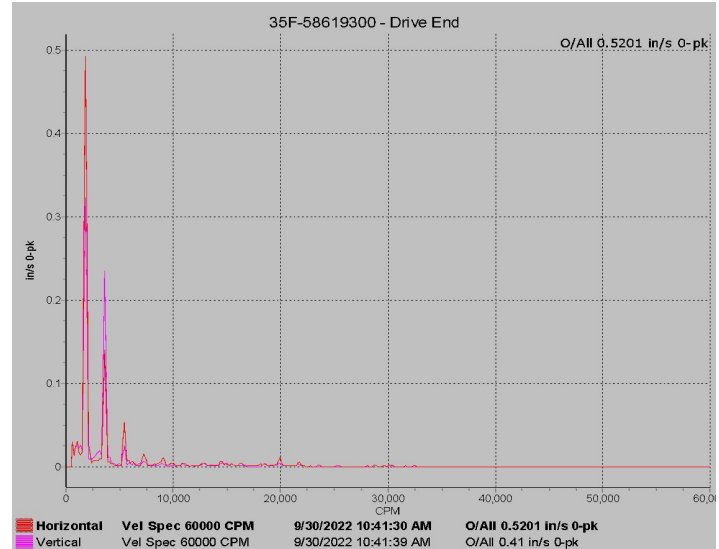
Ex. HC-11 Scrubber

3

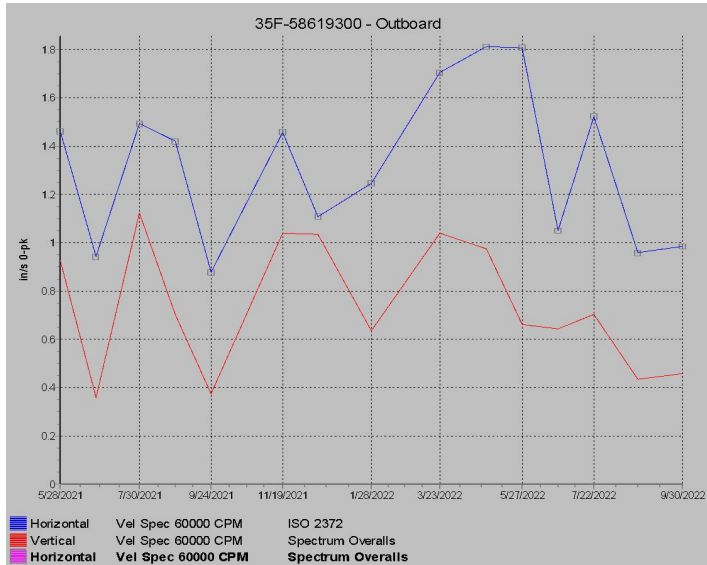
Data Collected:
January 1, 2023



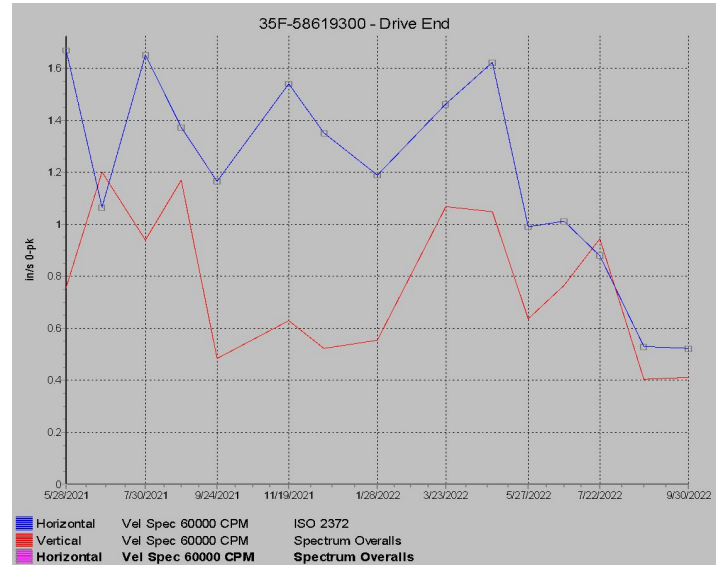
Motor Outboard



Motor Drive End



Motor Outboard Trend



Motor Drive End Trend

Findings: Although amplitudes have decreased, amplitudes remain elevated throughout motor and indications of a mass unbalance on motor and/or fan blades is present throughout unit.

Recommendations: Schedule motor and fan blades for inspection and balancing immediately.

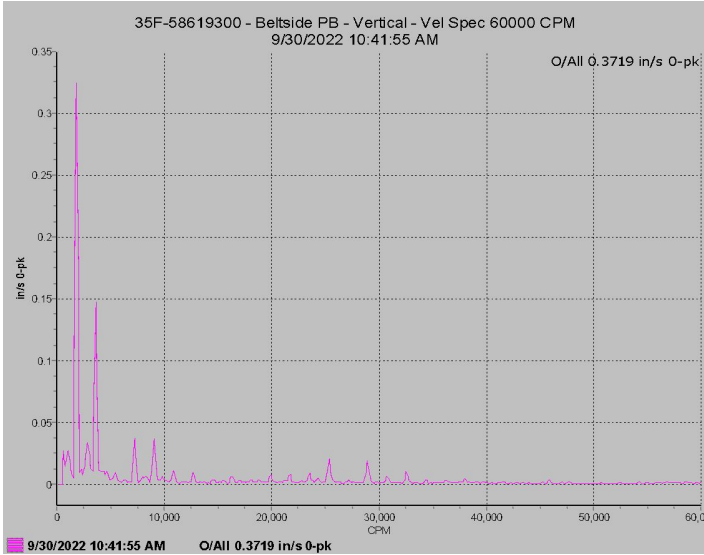
ABC Corporation – Anytown,

USA
58619300

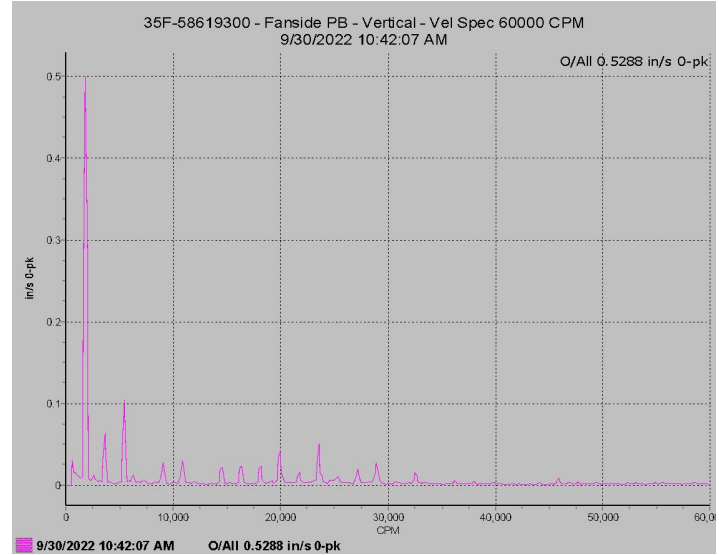
3

Data Collected:
January 1, 2023

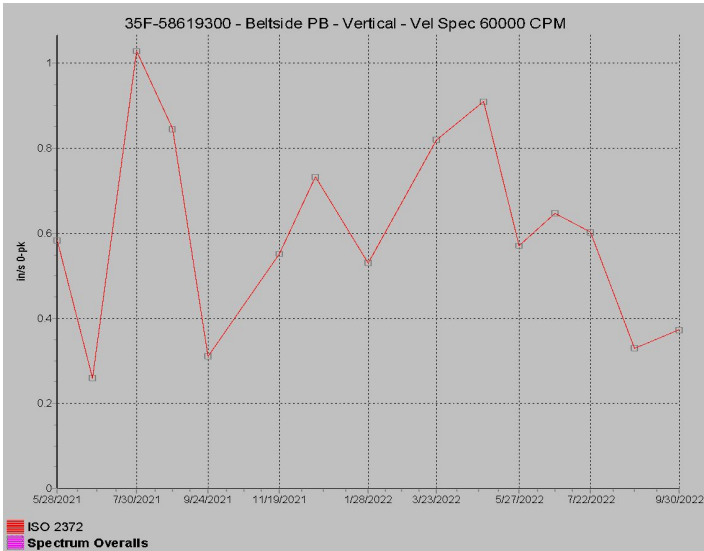
Ex. HC-11 Scrubber



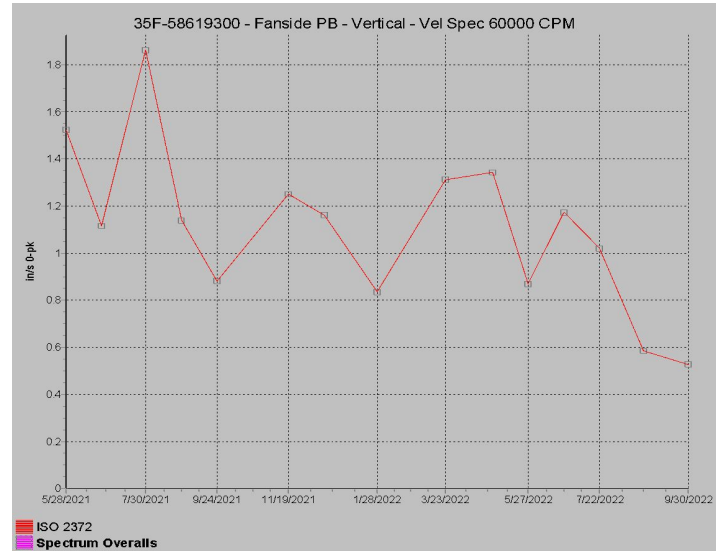
Belt Side Bearing



Fan Side Bearing



Belt Side Bearing Trend



Fan Side Bearing Trend

Findings: Although amplitudes have decreased, amplitudes remain elevated throughout motor and indications of a mass unbalance on motor and/or fan blades is present throughout unit.

Recommendations: Schedule motor and fan blades for inspection and balancing immediately.

ABC Corporation – Anytown,

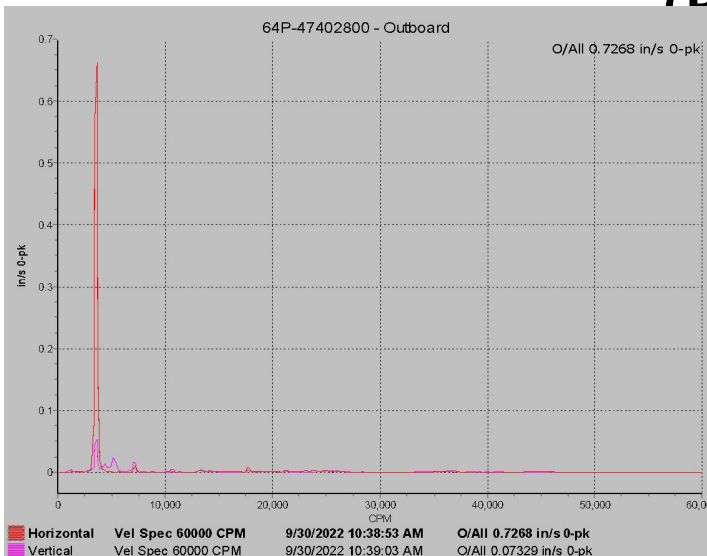
USA

Data Collected:
January 1, 20232

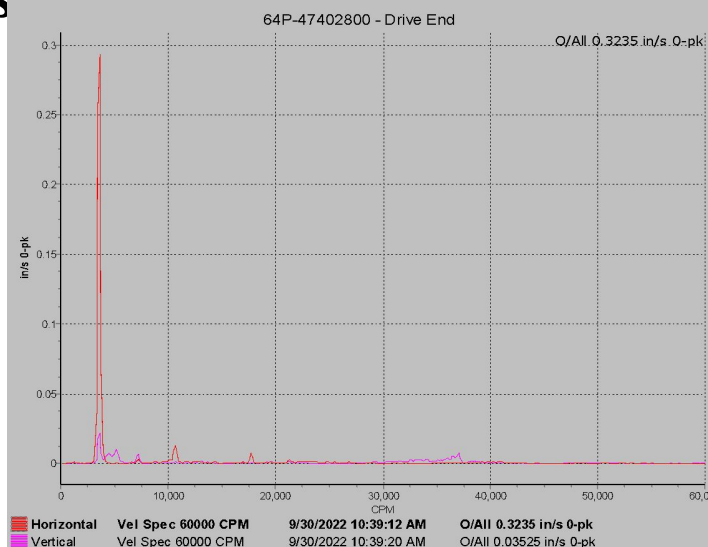
#1 Recirc.Twr Glycol Tank

4

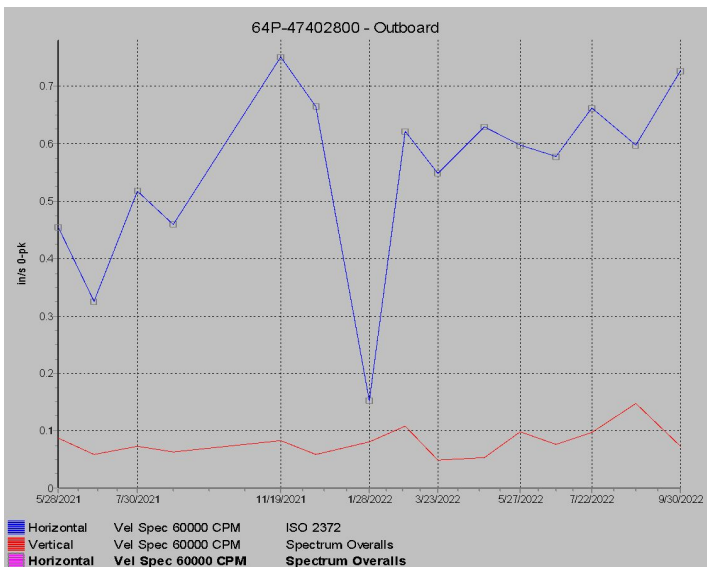
(East)



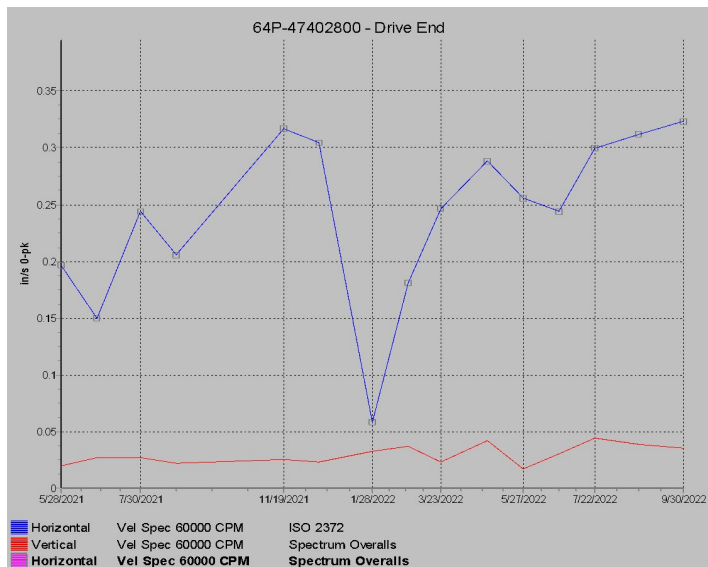
Motor Outboard



Motor Inboard



Motor Outboard Trend



Motor Inboard Trend

Findings: Amplitudes have remained elevated at both motor horizontal collection points and indications of possible mass unbalance on motor and/or possible coupling misalignment are present.

Recommendations: Schedule unit to be pm'd, balanced and aligned.

ABC Corporation – Anytown,

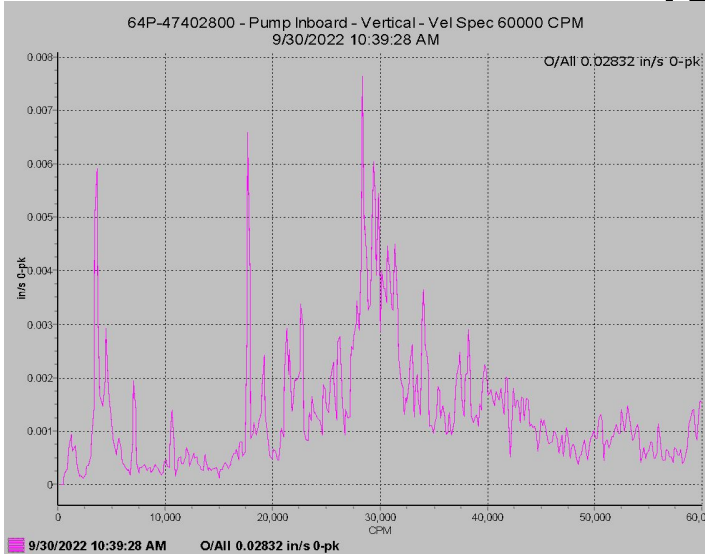
USA

Data Collected:
January 1, 2023

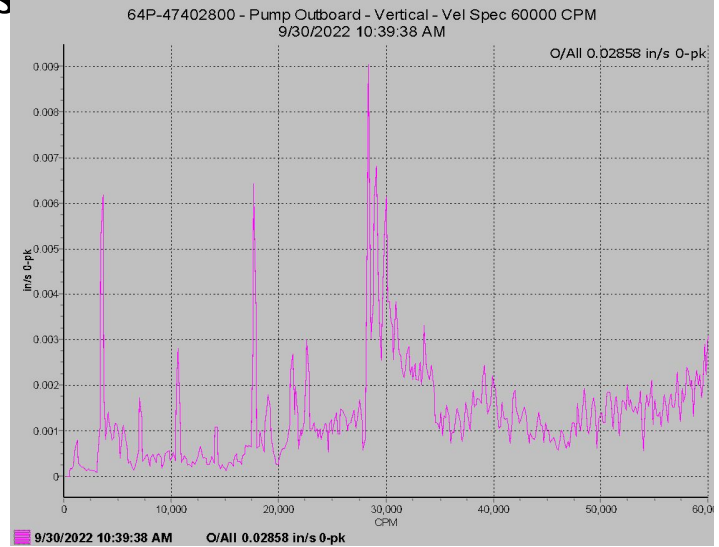
47402800
#1 Recirc.Twr Glycol Tank

5

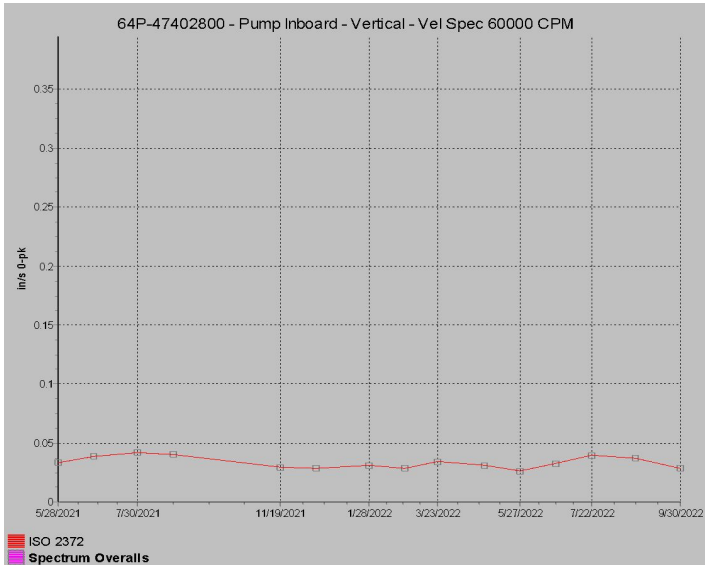
(East)



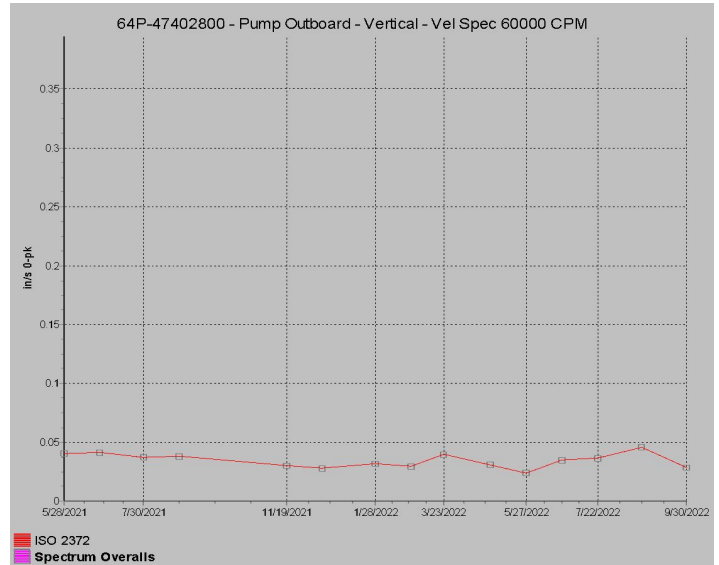
Pump Inboard



Pump Outboard



Pump Inboard Trend



Pump Outboard Trend

Findings: Amplitudes have remained stable throughout pump and remain relatively low and within acceptable parameters for this equipment.

Recommendations: Continue to monitor via periodic vibration data collection and analysis.

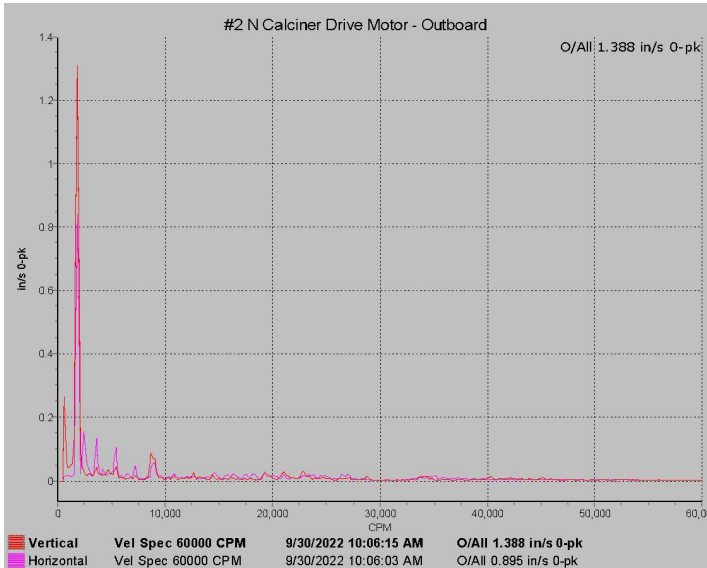
ABC Corporation – Anytown,

USA

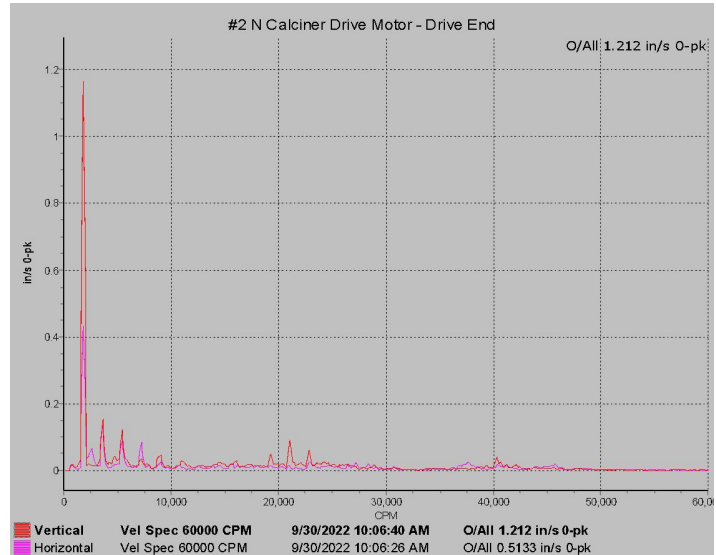
Data Collected:
January 1, 2023

North No. 2 Calciner Main Drive Motor

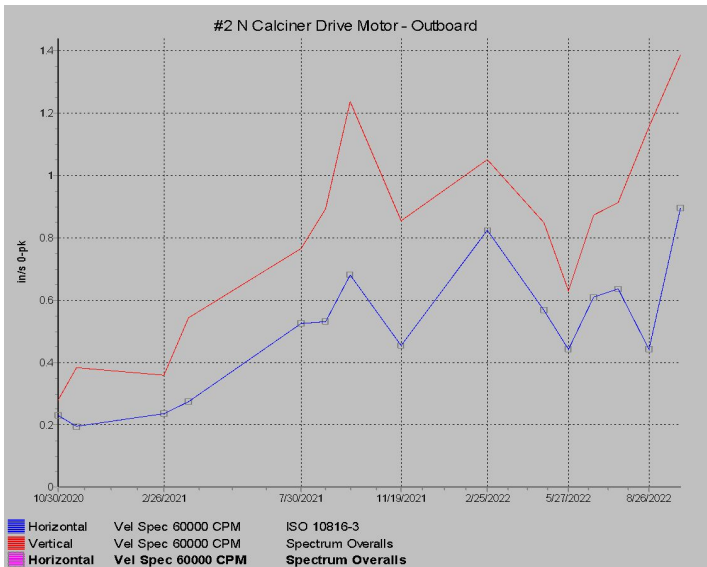
2



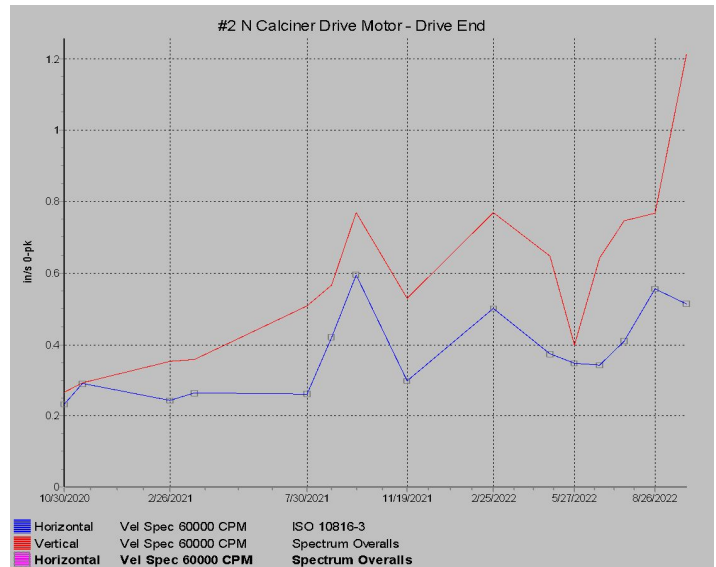
Motor Outboard



Motor Drive End



Motor Outboard Trend



Motor Drive End Trend

Findings: Amplitudes have remained elevated or have increased throughout motor and indications of bearing defects are present at this time.

Recommendations: Schedule unit to be inspected for bearing damage and possible motor replacement.

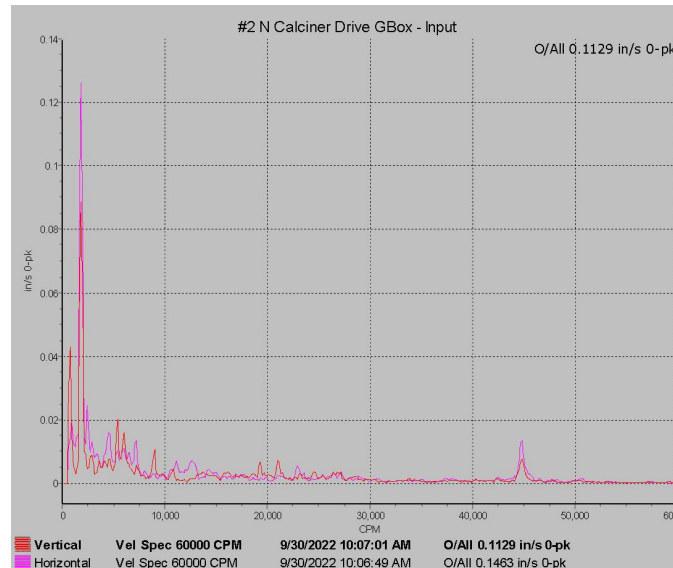
ABC Corporation – Anytown,

USA

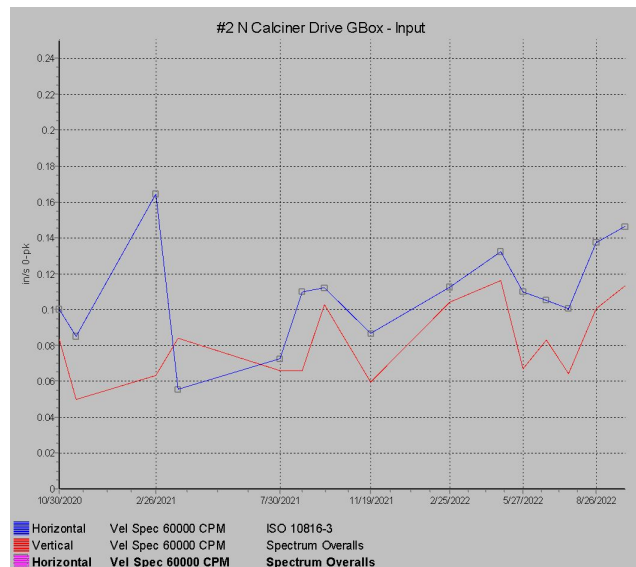
Data Collected:
January 1, 2023

North No. 2 Calciner Main Gearbox

5



Gearbox Inboard



Gearbox Inboard Trend

Findings: Amplitudes have remained fairly stable at the gearbox input collection points and data collected at this time remains within acceptable parameters for this equipment.

Recommendations: Continue to monitor via periodic vibration data collection and analysis.

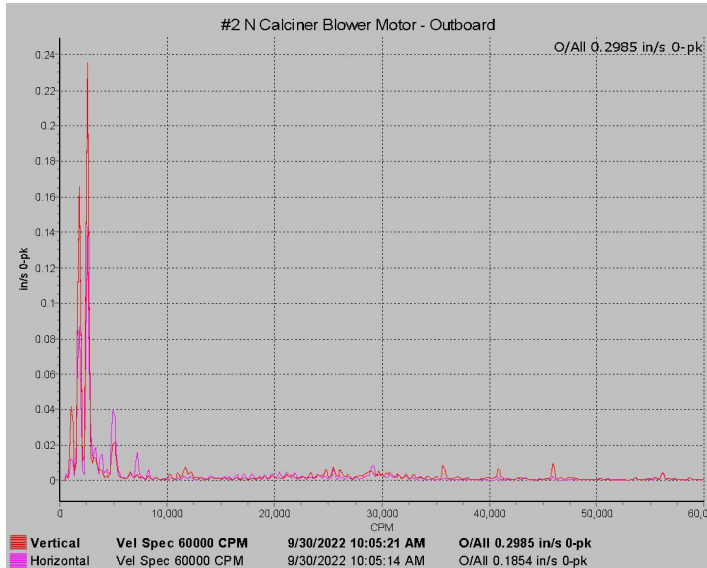
ABC Corporation – Anytown,

USA

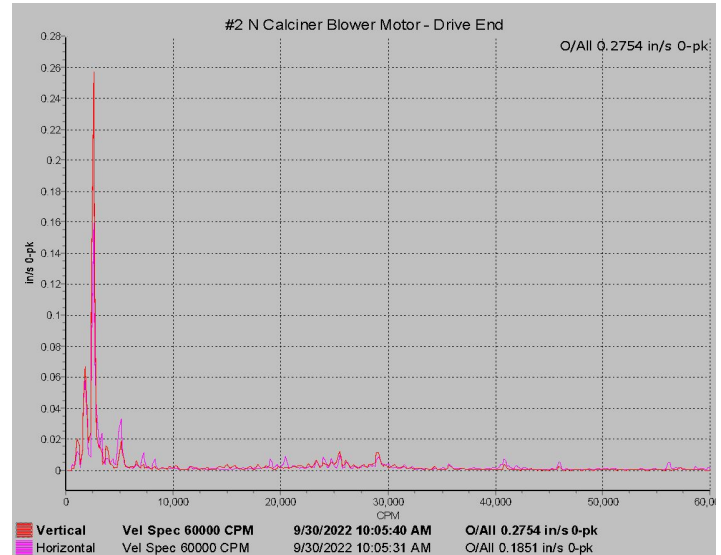
Data Collected:
January 1, 2023

North No. 2 Combustion Blower Motor

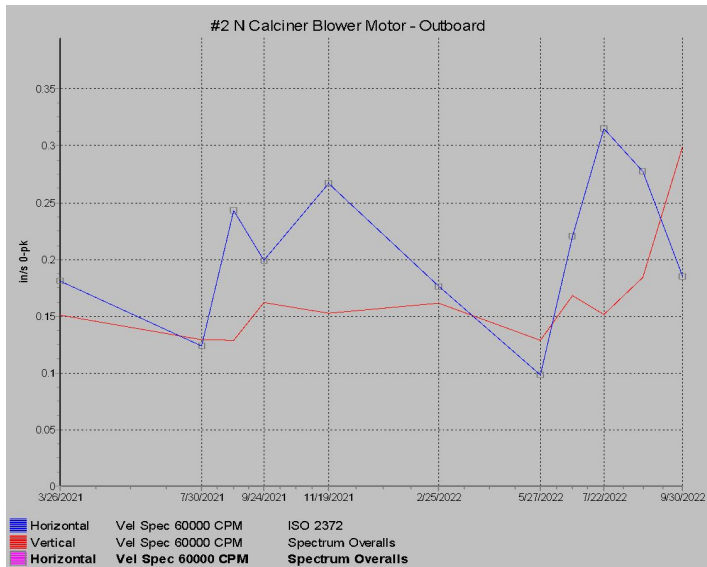
5



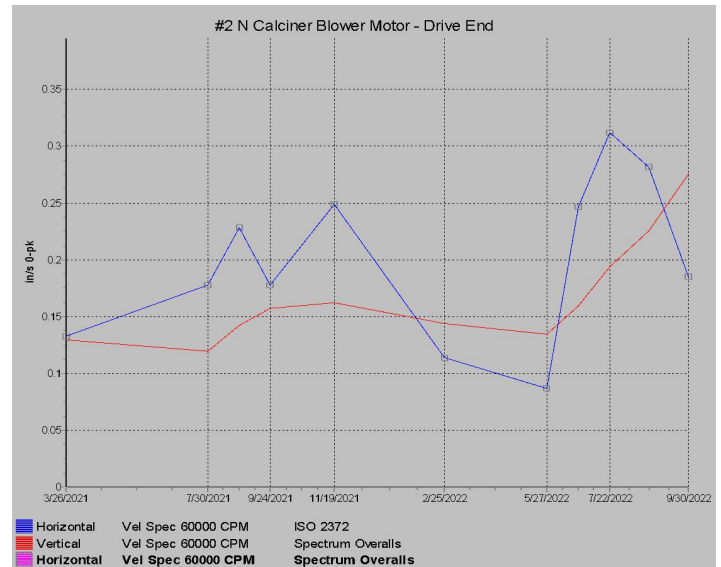
Motor Outboard



Motor Drive End



Motor Outboard Trend



Motor Drive End Trend

Findings: Although slightly elevated, amplitudes remain within acceptable parameters for this equipment.

Recommendations: Continue to monitor via periodic vibration data collection and analysis.